

Wastewater treatment plant Langnau im Emmental, wastewater storage basin Zeughaus

LDM partially filled Nominal diameter 400

Situation

- The customer wanted a precise and reliable measuring device to limit the amount of material being forwarded.
- Partial measurements such as individual flow speeds and measured filling heights should be recorded transparently and be viewable to verify the measurement results.
- The measuring device has to provide accurate measured values in partial filling and full filling.
- The measurement shall provide precise measured values regardless of the position of the downstream throttle valve.

«The LDM is a very intuitive system. The transmitter provides the information I need at a glance»

Hans Stucki, plant manager Wastewater treatment plant Langnau

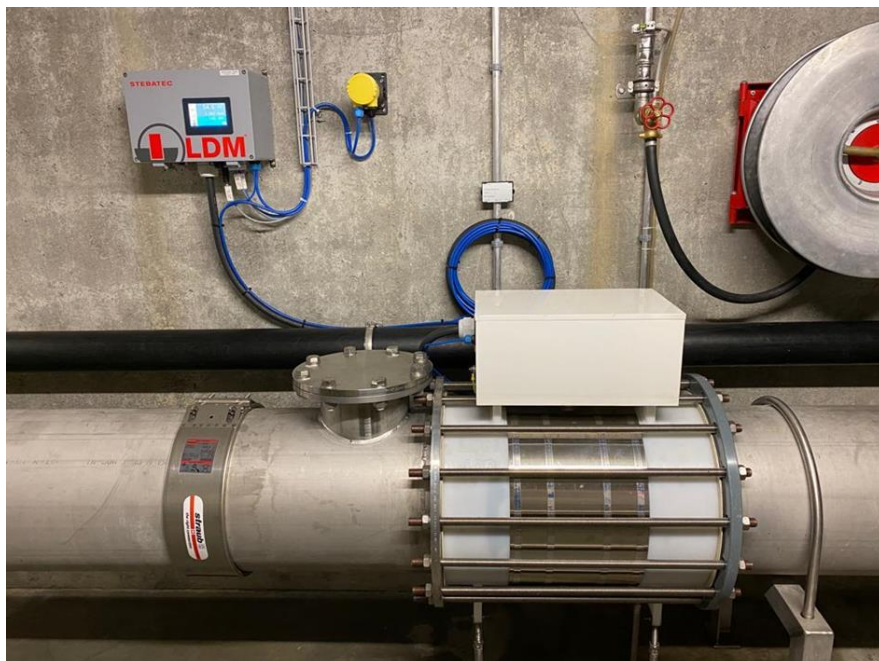


Figure 1: LDM partially filled installed. STEBATEC delivered and instructed the flow measurement. Assembly, stainless steel piping as well as electrical connection and connection were carried out by the customer